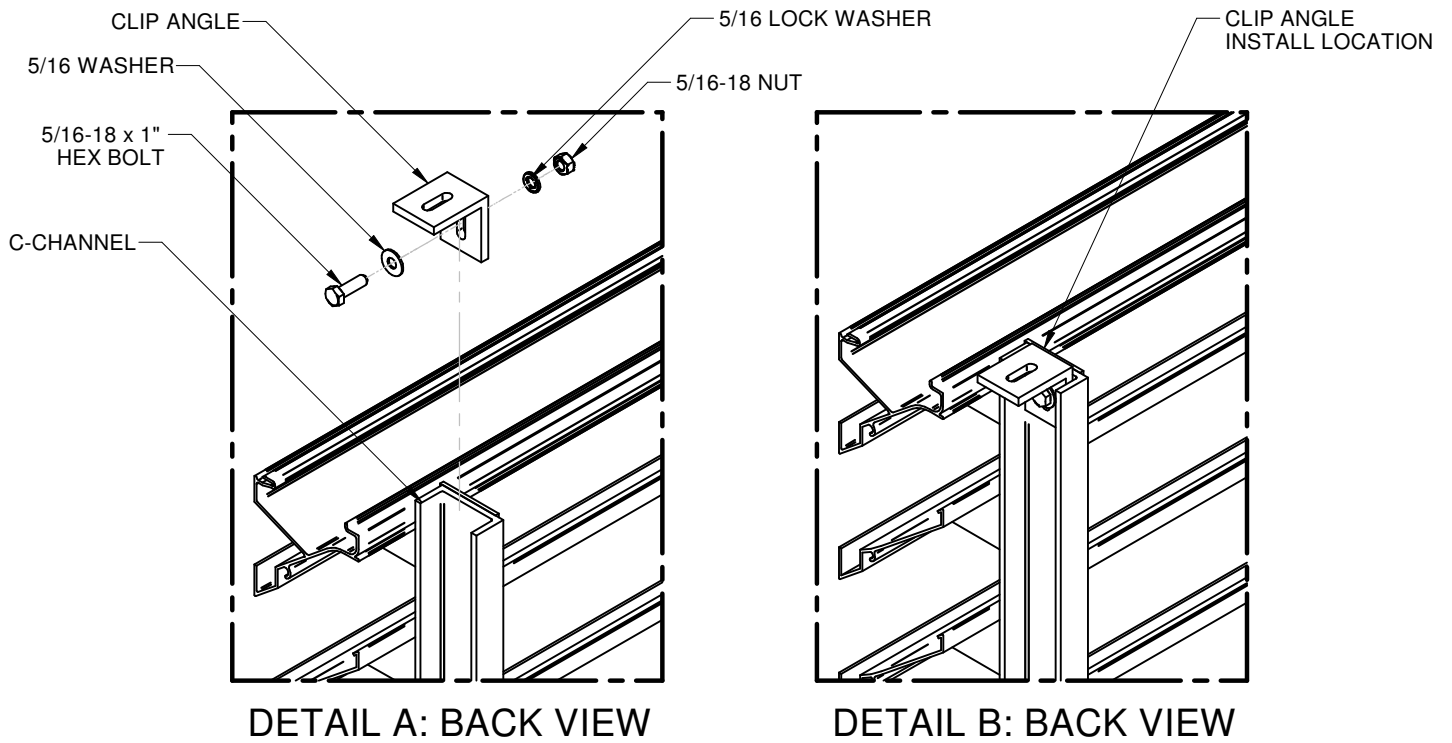


**CLIP ANGLE ASSEMBLY**

1. Drill a 3/8" hole approximately 7/8" from the end of the louver c-channel.
2. Loosely fasten the clip angle to the louver c-channel with the provided 5/16" hardware.
3. Center the louver in the opening and mount the clips to the structure with preferred hardware (by others).
4. Tighten the clip angles to the louver (Detail B) .



TITLE	
<b>CLIP ANGLE ASSEMBLY INSTRUCTIONS</b>	
DRAWING NUMBER	<b>271051</b>
SHEET	1 OF 1
© COPYRIGHT PRICE INDUSTRIES 2019	